

PIPER

2014

MERIDIAN



piper.com | 772.299.2403


Piper[®]

*Power
pure
and
simple.*

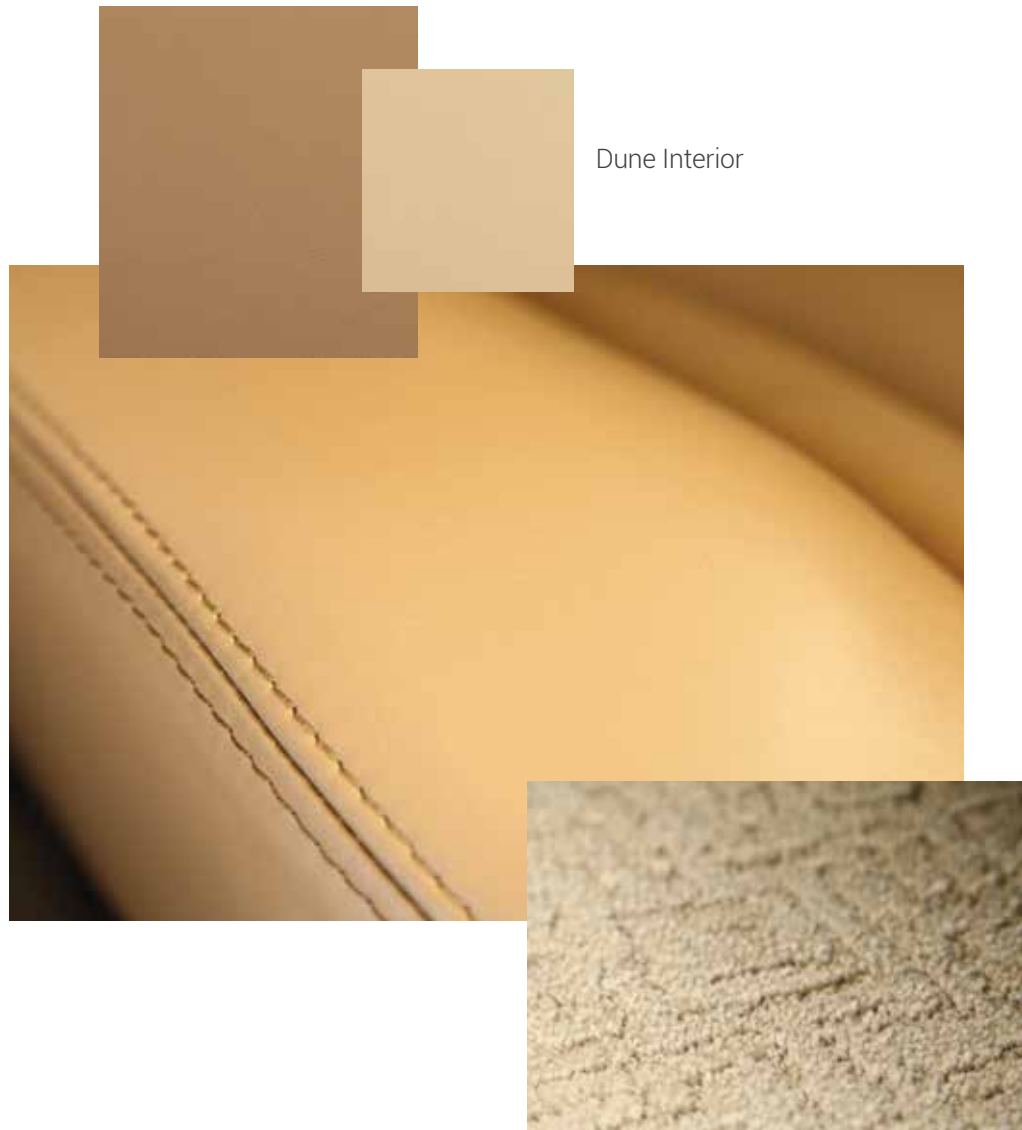




From Boardroom To Clubhouse.

Board meeting in Chicago, but a tee time in Atlanta? Not a problem. Whether you travel for business or pleasure, or a combination of the two, you need a product you can count on, for both performance and value. Built to maximize your travel experience, the Piper Meridian expertly balances performance and efficiency. Powered by a Pratt and Whitney Canada PT6A-42A engine, this product not only performs, but also brings a powerful value proposition to you and your bottom line, flight after flight.

Dune Interior



Cabin Class.

From the moment your passengers climb the airstair door, they will be reassured by the substantial feel and business-jet-like stance of the Piper Meridian. They'll relax in pressurized comfort up to 30,000 feet – far above most of the world's weather. They'll have room to stretch out in the comfort of club seating, with seats that fold for easier cockpit access and more versatility. A pair of power outlets make the work station live up to its name. When not in use, the workstation can disappear into the side panel for even more room. And they'll arrive refreshed because Meridian's cabin is quiet and virtually vibration-free, thanks to the smooth power of the PT6A-42A turbine engine with its four blade Hartzell propeller.



Styling



Glacier Interior

Meridian's interior is immersed in hand-selected leather and luxurious, durable carpeting. Select between two color palettes: Dune and Glacier, with a headliner and side panel in complementary colors.

Scan for a 360 degree interactive tour of the Piper Meridian.



piper.com





Safety Up Front.

The advanced configuration of the Garmin G1000 flight deck with its integrated GFC 700 flight control system gives you all the information you need to fly safely, securely and effortlessly. The Piper Meridian features a standard 15" Multi-Function Display (MFD), flanked by dual 10" Primary Flight Displays (PFDs). Data analysis has never been simpler. Increased situational awareness, redundant systems and intuitive controls make the Meridian cockpit the ultimate partnership of performance and technology.



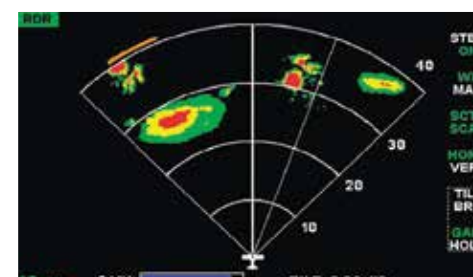
Primary Flight Displays (PFD)

Two high-resolution Primary Flight Displays put the flight instruments in direct line of sight from both left and right seats with no distracting parallax view.



Multi-Function Flight Display (MFD)

In the center of the panel, engine data, charts, traffic, weather, flight plans, menus and more are displayed on the large format, high-resolution, 15" display. Garmin's highly-respected user-friendly interface makes the MFD simple to navigate and puts a wealth of information at your fingertips.



Weather Monitoring

Meridian offers the unsurpassed optional on-board radar capabilities of the Garmin GWX 68 digital color radar. The GWX 68 easily penetrates and reports back the weather ahead with its 6.5 kilowatts of power. In addition, the GDL 69A provides datalink weather, with NEXRAD radar, winds aloft, METARs, TAFs, lightning, icing and other information available in the U.S., with a subscription to XM WX Satellite Weather.



Garmin GFC 700

The fully integrated flight control system provides exceptional flight automation with a dual AHRS-based system. The system offers top safety features and incomparable performance, seamlessly integrating a flight director, autopilot, automatic trim and yaw damper into the G1000 suite.



Synthetic Vision

Garmin Synthetic Vision Technology takes situational awareness to a new level, regardless of what you can or cannot see through the windshield. Obstacles, terrain, water and airports are graphically depicted drawing from multiple certified databases.

Global Customer Support.

We believe, when you purchase a Piper aircraft, you join our family. That's why we pledge to offer a relationship that extends far beyond the delivery of your new airplane with an outstanding ownership experience. Our team in Vero Beach, Florida works hand in hand with the global Piper network to make your delivery, professional training and support second to none. If you already own a Piper you know the value that comes along with it.

If you are thinking of buying a new Piper, now is the time to learn what it means to become a Piper owner.



With more than 100 sales and service centers around the globe, you can be sure we have the support you need in your area. Scan to find your closest Piper sales or service center.



piper.com



Specifications

MERIDIAN | \$2,219,850**

Standard Equipped List Price

Engine

Pratt & Whitney Canada PT6A-42A

Horsepower: Flat Rated at 500 SHP

TBO: 3,600 hours

Hot Section Inspection: 1,800 hours

Weights

Maximum Takeoff Weight: 5,092 lbs | 2,310 kg

Maximum Ramp Weight: 5,134 lbs | 2,329 kg

Standard Equipped Weight: 3,436 lbs | 1,559 kg

Standard Useful Load: 1,698 lbs | 770 kg

Dimensions

Wing Span 43.0 ft/13.1 m | Length 29.6 ft/9.0 m | Height 11.3 ft/3.4 m

Propeller

Hartzell 4 Blade | Constant Speed | Reversible

Diameter: 82 in | 208 cm

Standard Equipment

AVIONICS

Garmin G1000 Avionics Suite with Synthetic Vision
Dual 10" PFDs, Single 15" MFD, Dual GIA 63W NAV/COM/GPS, GFC 700 Autopilot, GMC 710 AP Controller, GCU 476 Keypad, Garmin FliteCharts, SafeTaxi, Dual GMA 1347 Audio Panels, Dual GDC 74A Air Data Computers, GTX 33 ES Mode S Transponder, GWX 68 Weather Radar and Stand-by Flight Instruments

OTHER EQUIPMENT

Flight Into Known Icing (FIKI) | PiperAire Air Conditioning | Yaw Damper System | Hardwired Cockpit Bose A20 Headsets | Premium Leather Interior | Meridian Pilot Training

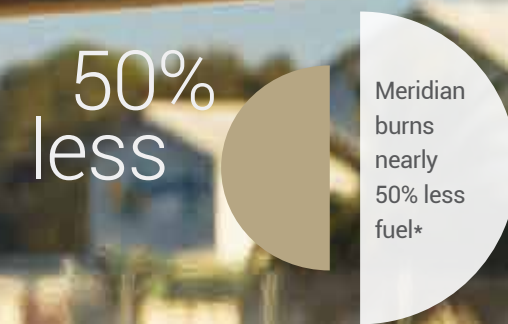
Optional Equipment

AVIONICS EQUIPMENT OPTIONS

- 235: Jeppesen ChartView – \$4,029
(One year subscription to Jeppesen pilot pack)
- 269: GDL 69A XM Satellite Radio/Weather – \$10,750
- 295: KTA 870 Traffic Advisory System – \$48,960
- 330: Stormscope WX-500 – \$11,120
- 450: TAWS-B (Terrain Awareness and Warning System) – \$12,240
- 524: King KR 87 ADF – \$8,050
- 563: King KN 63 DME – \$10,400
- 631: GTX 33 ES Second Transponder – \$9,385
- 641: GTX 33DES Diversity Digital Transponder with Dual Antennas (Replaces standard GTX33ES) – \$12,268

ADDITIONAL OPTIONS

- 363: United Kingdom Lighting Package – \$1,380
- 700: Top Metallic Base Coat – \$6,690
- 710: Bottom Metallic Base Coat – \$6,690
- 715: Optional Meridian Paint Scheme – Quoted Upon Request
- Premier Elegance Interior (Dune or Glacier) – Standard
- AMSAFE: AmSafe Aviation Airbag System (crew seats) – \$5,820 (Installed after delivery)
- Additional Special Options – Quoted Upon Request



Maximum Cruise Speed

260 ktas | 482 km/h

Range with 45 Min. Reserve

1,000 nm | 1,852 km

Maximum Approved Altitude

30,000 ft | 9,144 m
For Airspace Requiring RVSM, limited to 28,000 ft | 8,534 m

Fuel Capacity

Useable:
170 US gal | 644 liters

Takeoff Distance

Ground Roll: 1,650 ft | 503 m
Total Over 50 ft Obstacle:
2,438 ft | 743 m

Landing Distance

Ground Roll: 1,020 ft | 311 m
Total Over 50 ft Obstacle:
2,110 ft | 643 m

Cabin Pressurization

Maximum Cabin Differential:
5.6 psid

* As compared to the closest competitor, Meridian is 47% less expensive to operate and burns 47.79% less fuel per hour – Source: Conklin & de Decker 2013 Vol 1

** Fly-Away-Factory (F.A.F.) Vero Beach, FL – Dealer delivery and local taxes extra.





With its M-Class heritage rooted in the original Malibu, the Meridian is specifically engineered to give you the lifestyle you want – freedom to go where you want, when you want, without waiting or hassles – and to do it with advanced technological innovation.

No matter what you fly now, the Piper Meridian will take you to another level. It's not just about speed, range and capability, it's the experience of flying an aircraft quite literally like no other. And, just like every Piper aircraft, the Meridian is about the pure joy of flight.



On Location

Ocean Reef Club
Key Largo, FL



Piper Aircraft, Inc. reserves the right to make changes, including, but not limited to, changes in specifications, materials, equipment and/or prices at any time without prior notice. It is the responsibility of the pilot to conduct all operations in accordance with the approved Pilot's Operating Handbook, which is the only official source of data.
© 2014 Piper Aircraft, Inc.

Piper[®]

Piper Aircraft, Inc. | 2926 Piper Drive | Vero Beach | FL | 32960 | 772.299.2403

piper.com | 1.866.FLY.PIPER